



**MALAWI GOVERNMENT
NATIONAL STATISTICAL OFFICE**

AGRICULTURE PHOTO AID

FOURTH INTEGRATED HOUSEHOLD SURVEY, 2016/17

Table of Contents

Type of Erosion Control/Water Harvesting Facilities.....	1
Type of Erosion Control/Water Harvesting Facilities (Continued.....)	2
Systems of Irrigation.....	3
Systems of Irrigation (Continued.....)	4
Method of Obtaining Water For Irrigation.....	5
Land Preparation Methods.....	6
Land Preparation Methods (Continued.....)	7
Land Preparation Implements.....	7
Land Preparation Implements (Continued.....)	8
HIS4 Technology Identification Photo Aids:.....	8
Crop Residue (D61_1).....	8
Tree Species.....	9
Tree Species (Continued.....)	10
Tree Species (Continued.....)	11
Tree Species (Continued.....)	12
Cover Crops.....	12
Crop Diseases.....	13
Common Maize Diseases.....	13
Common Maize Diseases (Continued.....)	14
Common Maize Diseases (Continued.....)	15
Common Cassava Diseases.....	16
Groundnut Diseases.....	17
Groundnut Diseases (Continued.....)	18
LIVESTOCK MODLE:.....	19
Cattle Breeds.....	19
Cattle Breeds (Continued.....)	20
Goat Breeds.....	21
Goat Breeds (Continued.....)	22
Sheep Breeds.....	22
Sheep Breeds (Continued.....)	23
Pig Breeds.....	23
Chicken Breeds.....	24



Type of Erosion Control/Water Harvesting Facilities



2. TERRACES



**3. EROSION
CONTROL
BUNDS**



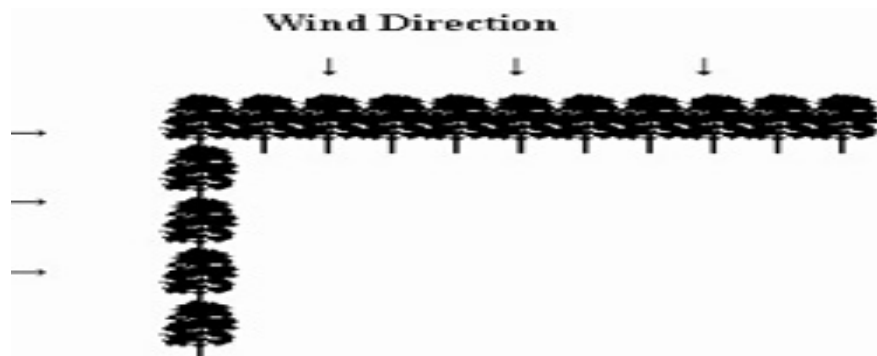
**4.
GABIONS/
SANDBAGS**

5. VETIVER GRASS





Type of Erosion Control/Water Harvesting Facilities (Continued.....)



**6. TREE
BELTS**

7. WATER HARVEST BUNDS



**8.
DRAINAG
E
DITCHES**



Systems of Irrigation

1. DIVERT STREAM



2. BUCKET





MALAWI FOURTH INTEGRATED HOUSEHOLD SURVEY PHOTO AID FOR
COLLECTING AGRICULTURE INFORMATION



Systems of Irrigation (Continued.....)



**3. HAND
PUMP**



**4.
TREADLE
PUMP**



**5. MOTOR
PUMP**



**6. Gravity (an elevated
reservoir with a pipe
coming out the bottom)**



MALAWI FOURTH INTEGRATED HOUSEHOLD SURVEY PHOTO AID FOR
COLLECTING AGRICULTURE INFORMATION



Method of Obtaining Water For Irrigation



**1. WATERING
CAN**



2. HORSE PIPE



**3.
SPRINKLER**



**4. DRIP
IRRIGATION**



**5.
FLOODING**



Land Preparation Methods



1. TRADITIONAL RIDGING



**2. TIED
OR BOX
RIDGING**



**3.
PLANTING
PITS**



**4. ZERO
TILLAGE**



Land Preparation Methods (Continued.....)

MINIMUM TILLAGE (ONLY PART OF FIELD TILLED; E.G. IN ZONES OR STRIPS /CONTOURS)

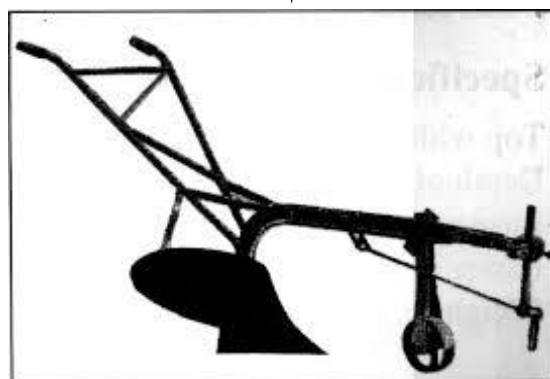


Land Preparation Implements

1. HAND HOE



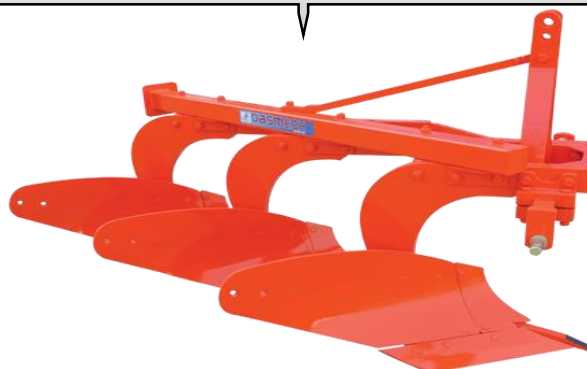
2. ANIMAL/ MOULBOARD PLOUGH



4. ANIMAL. RIPPER



5.TRACTOR. MOULBOARD PLOUGH





Land Preparation Implements (Continued.....)

6. TRACTOR, DISC PLOUGH RIPPER



7. TRACTOR, RIPPER



HIS4 Technology Identification Photo Aids:

Crop Residue (D61_1)

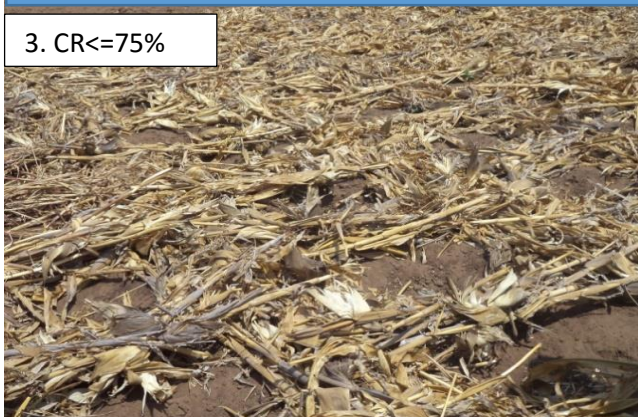
1. CR ≤ 25%



2. CR ≤ 50%



3. CR ≤ 75%



4. CR > 75%





MALAWI FOURTH INTEGRATED HOUSEHOLD SURVEY PHOTO AID FOR
COLLECTING AGRICULTURE INFORMATION



Tree Species





Tree Species (Continued.....)

Lukina



Jatropha



Moringa



Acacia



Acacia



Acacia





MALAWI FOURTH INTEGRATED HOUSEHOLD SURVEY PHOTO AID FOR
COLLECTING AGRICULTURE INFORMATION



Tree Species (Continued.....)

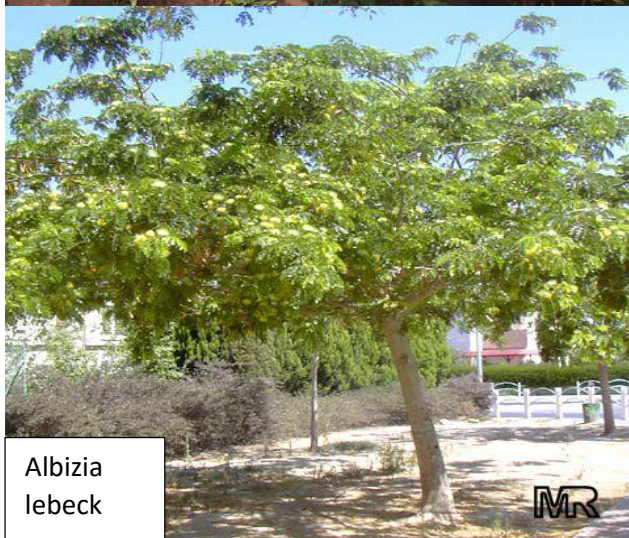
India
tree



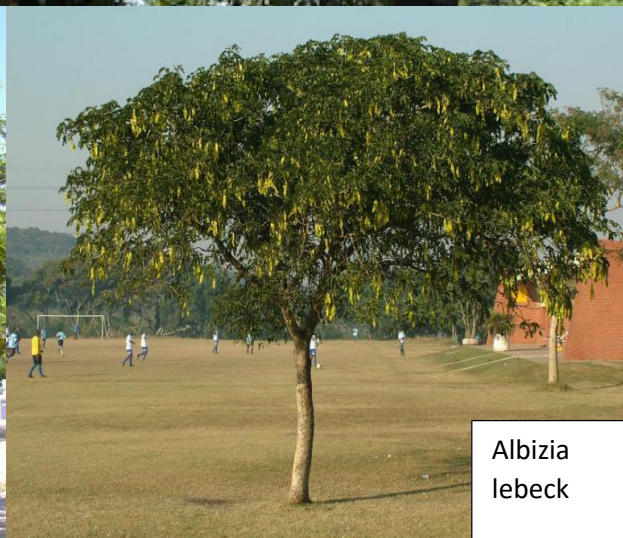
Senna
siamea



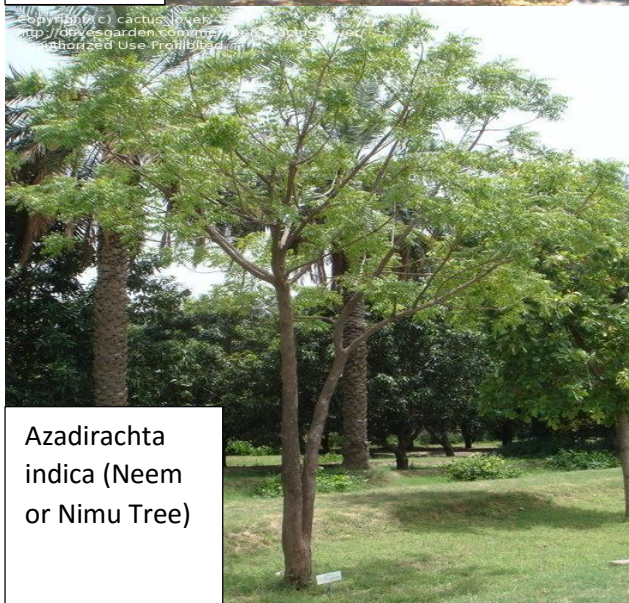
Albizia
lebeck



Albizia
lebeck



Azadirachta
indica (Neem
or Nimu Tree)



Neem
tree





MALAWI FOURTH INTEGRATED HOUSEHOLD SURVEY PHOTO AID FOR
COLLECTING AGRICULTURE INFORMATION



Tree Species (Continued.....)



Eucalyptus Globus



Eucalyptus
Globus



Pine tree



Pine tree

Cover Crops



Lablab



Lablab
seeds



Macuna
Puriens

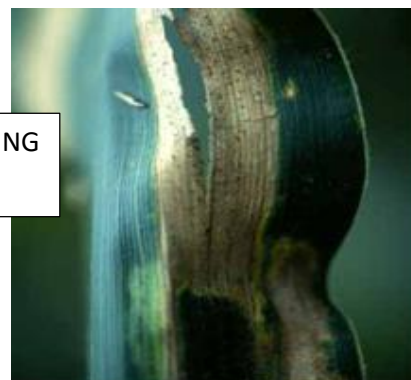
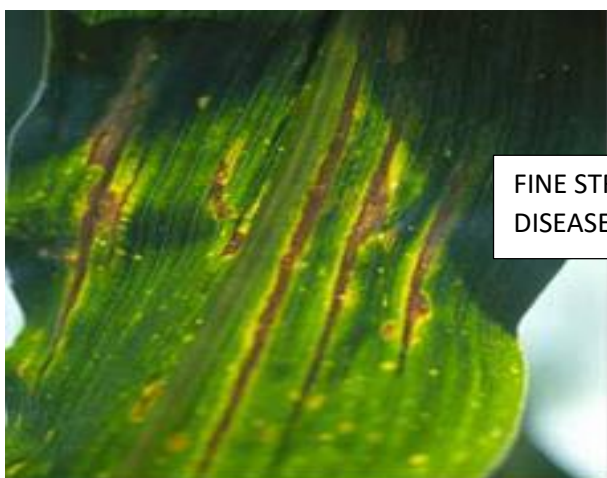


Macuna
seeds



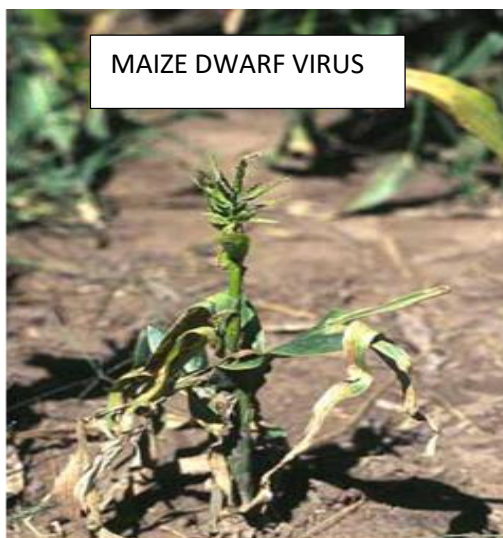
Crop Diseases

Common Maize Diseases





Common Maize Diseases (Continued.....)

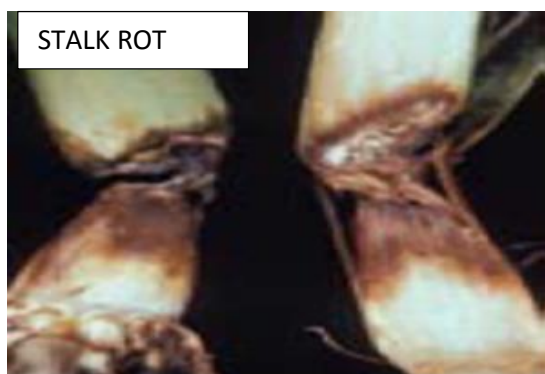
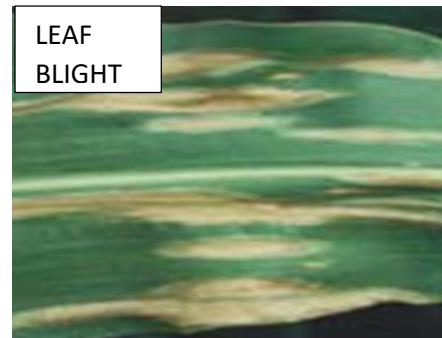




MALAWI FOURTH INTEGRATED HOUSEHOLD SURVEY PHOTO AID FOR
COLLECTING AGRICULTURE INFORMATION



Common Maize Diseases (Continued.....)





Common Cassava Diseases



CASSAVA MOSAIC. AFRICAN
CASSAVA MOSAIC VIRUS (ACMV)



CASSAVA BACTERIAL BLIGHT.



BROWN LEAF SPOT. CERCOSPORIDIUM HENNINGSII.



WHITE LEAF SPOT.
CERCOSPORA VICOSAE.



CASSAVA ROOT ROT
DISEASE

Cassava brown streak disease



IITA

Cassava brown streak virus
studies



www.iita.org



Groundnut Diseases



AFLATOXIN – A TYPE OF MYCOTOXIN



TERMITES DAMAGE



GROUNDNUT ROSETTE



EARLY AND LATE LEAF SPOT





Groundnut Diseases (Continued.....)



RUST - PUCCINIA ARACHIDIS



STUNT VIRUS





LIVESTOCK MODLE:

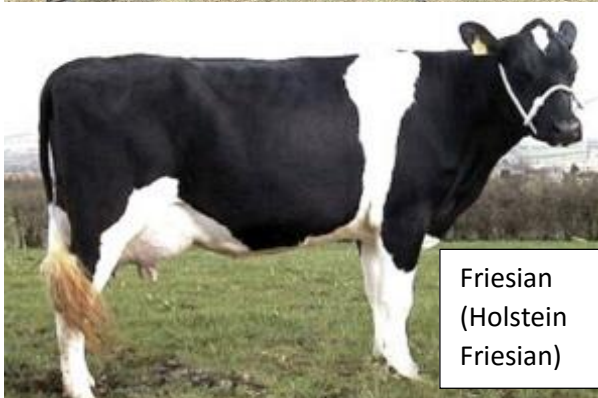
Cattle Breeds



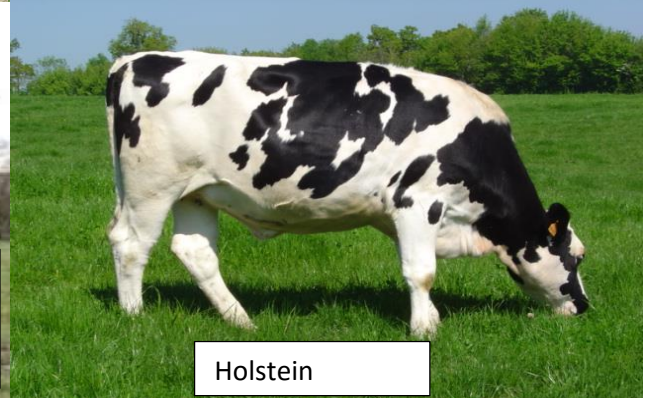
Malawian Zebu



Boran



Friesian
(Holstein
Friesian)



Holstein



Jersey



Guernsey



MALAWI FOURTH INTEGRATED HOUSEHOLD SURVEY PHOTO AID FOR
COLLECTING AGRICULTURE INFORMATION



Cattle Breeds (Continued.....)



Ayrshire



Brown
Swiss



Brahman



Hereford



Sahiwal





MALAWI FOURTH INTEGRATED HOUSEHOLD SURVEY PHOTO AID FOR
COLLECTING AGRICULTURE INFORMATION



Goat Breeds



East African
Goat



Local Malawi
Goat



Boer goat



Toggenburg



Saanen White
goats



Anglo-
Nubians



Alpine goats





**MALAWI FOURTH INTEGRATED HOUSEHOLD SURVEY PHOTO AID FOR
COLLECTING AGRICULTURE INFORMATION**



Goat Breeds (Continued.....)



Black Bengal goat



Barabari goat



Sheep Breeds



Suffolk
Sheep



Dorper
Sheep



Black headed
Persian sheep



Southdown
Sheep



Sheep Breeds (Continued.....)

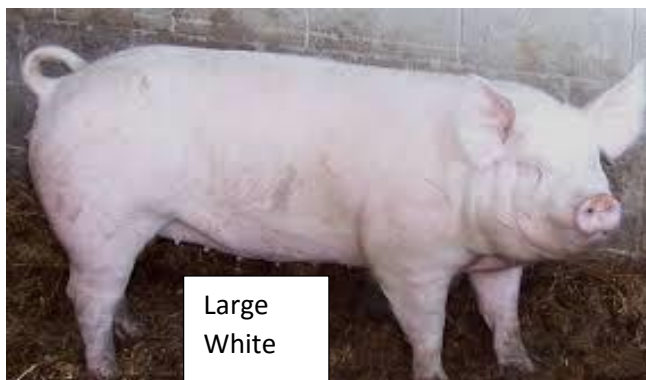


Merino
Sheep



South
African
Sheep

Pig Breeds



Large
White



Duroc



Landrace



Camborough



Large white



Chicken Breeds



Kuroiler



Black Atralorp



Sussex



New Hampshire



Star
Brow



Leghorn
Chicken



Plymouth



Malawi Dwarf
Chicken